

Finnrick Analytics
 Finnrick.com
 Austin, TX



Project 135393
Lab # 129581
Date Rec'd 10/14/2025
Report Issued 10/23/2025

Project
Sample

GHK-Cu 50 mg k47cprj

Certificate of Analysis



<u>Analyte</u>	<u>Result</u>	<u>LOQ</u>	<u>Units</u>	<u>Method</u>	<u>Date</u>	<u>% of Label</u>
Peptide Analysis						
Chromatographic purity	>99.95	0.5	%	HPLC-UV/MS	10/21/2025	
Total peptide mass	50.6	0.5	mg	HPLC-UV/MS	10/21/2025	101.1
GHK-Cu	ID Confirmed			HPLC-UV-MS	10/21/2025	

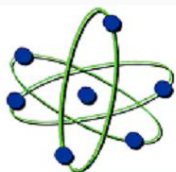
Safer.

The data presented are from the analysis of the sample shown and meet Krause Analytical internal quality assurance criteria unless otherwise flagged. Methods shown reference current Krause Analytical SOPs
 ND - Not detected LOQ - limit of quantification
 Copyright © 2025 Krause Analytical LLC. All rights reserved.

Respectfully submitted,

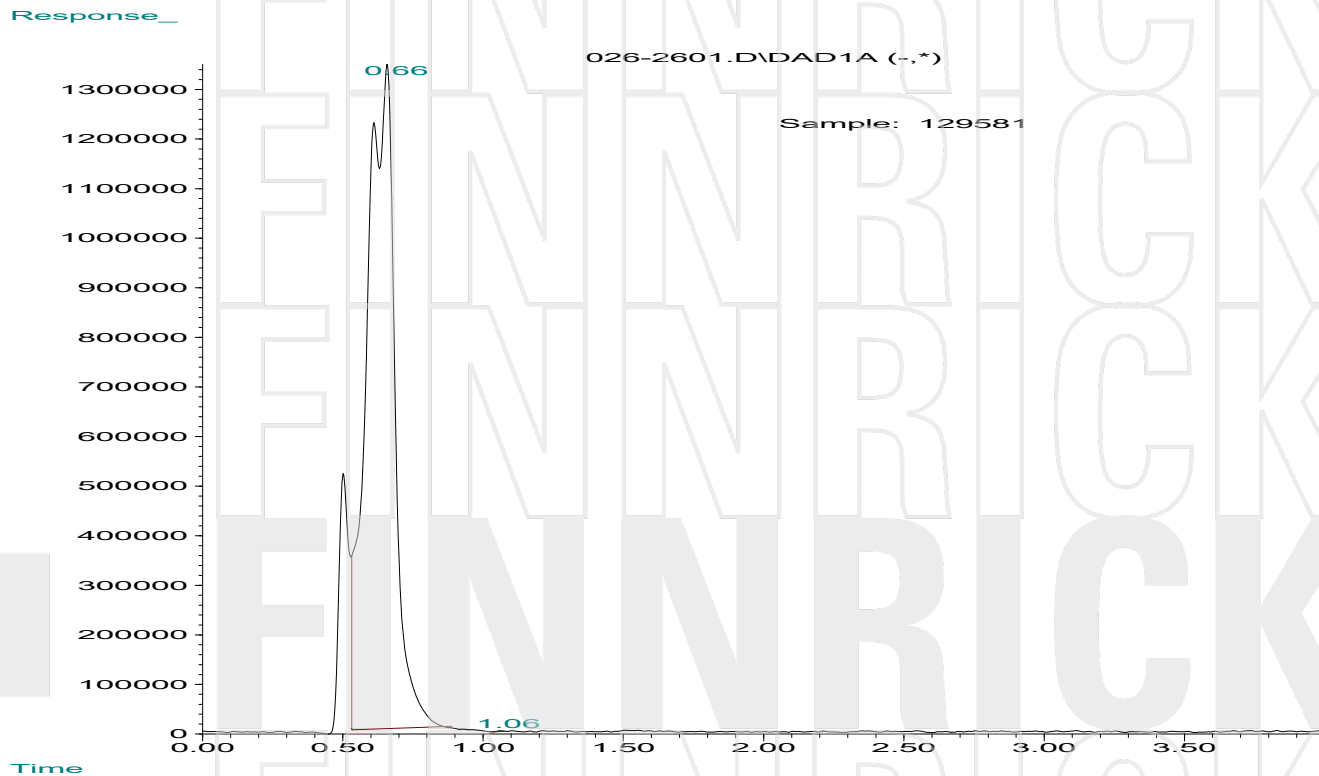
Mark C. Krause
 Laboratory Director

8127 Mesa Drive Suite B-206 Austin, TX 78759

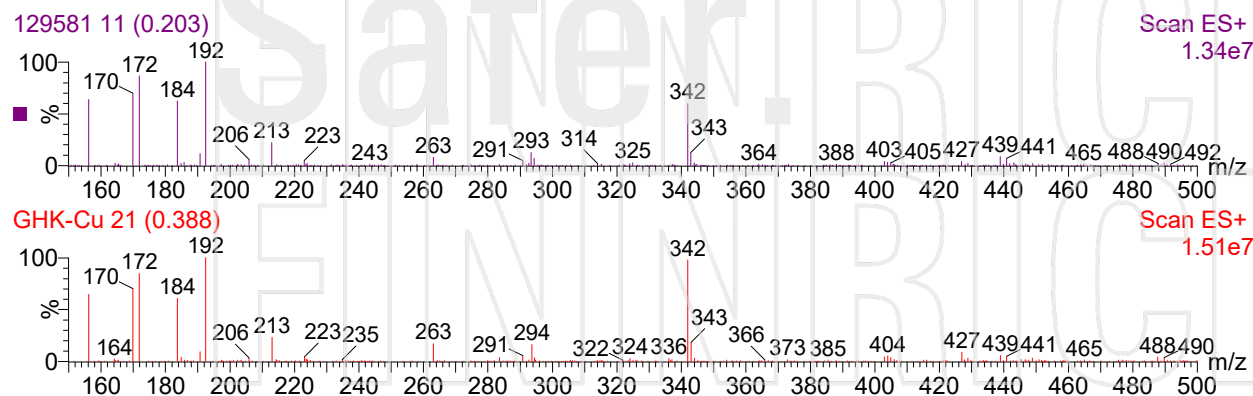


krause analytical

Chromatogram



Mass spectrum/Reference Spectrum



Krause Analytical, LLC 8127 Mesa Drive Suite B-206 Austin, TX 78759 info@krauseanalytical.com