

Finnrick Analytics
 Finnrick.com
 Austin, TX

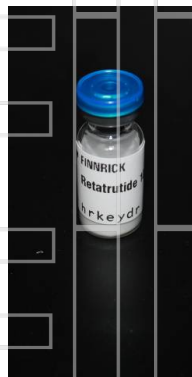


Project 135393
Lab # 129615
Date Rec'd 10/14/2025
Report Issued 10/23/2025

Project
Sample

Retatrutide 10 mg hrkeydr

Certificate of Analysis



<u>Analyte</u>	<u>Result</u>	<u>LOQ</u>	<u>Units</u>	<u>Method</u>	<u>Date</u>	<u>% of Label</u>
Peptide Analysis						
Chromatographic purity	99.57	0.5	%	HPLC-UV/MS	10/22/2025	
Total peptide mass	10.6	0.5	mg	HPLC-UV/MS	10/22/2025	106.2
Retatrutide	ID Confirmed			HPLC-UV-MS	10/22/2025	

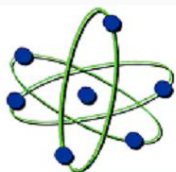
Safer.

The data presented are from the analysis of the sample shown and meet Krause Analytical internal quality assurance criteria unless otherwise flagged. Methods shown reference current Krause Analytical SOPs
 ND - Not detected LOQ - limit of quantification
 Copyright © 2025 Krause Analytical LLC. All rights reserved.

Respectfully submitted,

Mark C. Krause
 Laboratory Director

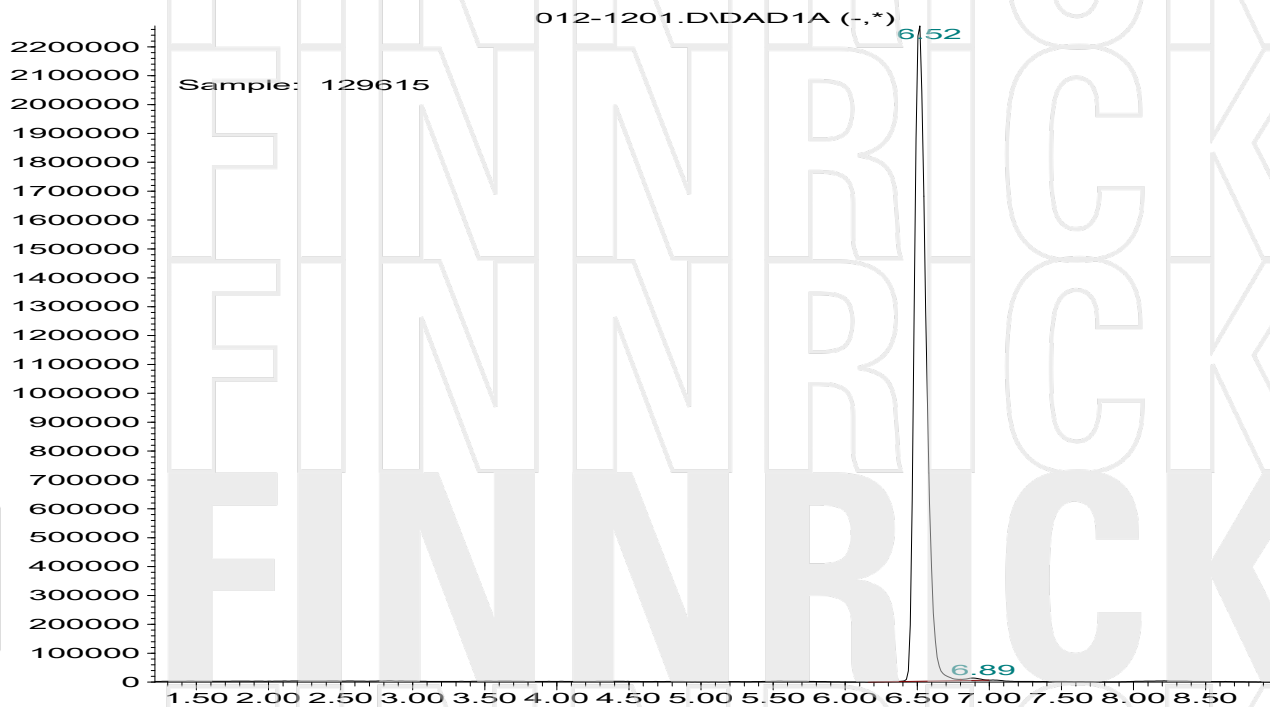
8127 Mesa Drive Suite B-206 Austin, TX 78759



krause analytical

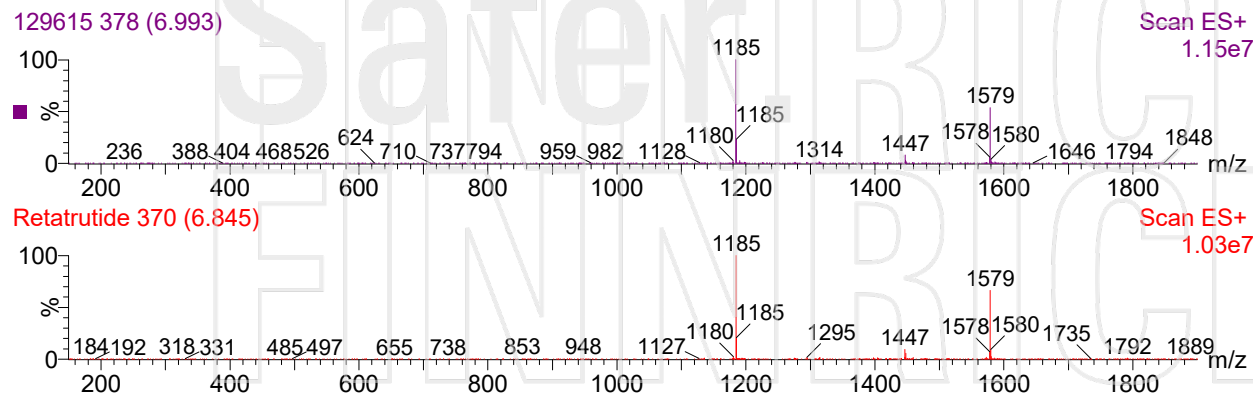
Chromatogram

Response_



Time

Mass spectrum/Reference Spectrum



Krause Analytical, LLC 8127 Mesa Drive Suite B-206 Austin, TX 78759 info@krauseanalytical.com